

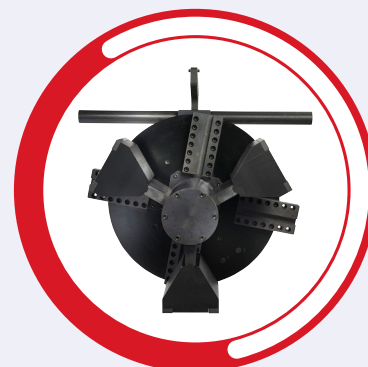


PIPE EQUIPMENT SPECIALISTS

PREP 24 PIPE BEVELLING 7" to 24"



SCAN QR CODE
TO WATCH VIDEO



TAG PREP 24

Portable Pipe Beveling Machine

RANGE: 175 - 600mm i/d / 6.9 - 23.6" i/d

- **Functions:** External beveling
Internal beveling
Facing
Counter-boring
Weld removal
J-prepping
Compound bevels
- **Materials:** Any kind of steel and exotic alloy
- **Power:** Servo electric (Recommended), pneumatic or hydraulic



FEATURES AND ADVANTAGES

The PREP 24 is the largest in TAG's new range of a heavy duty mid-large diameter beveling machines.

Offering ratcheted i/d jaw locking as well as ratchet bevel feed control for effortless heavy wall preps, offered with an extremely powerful user friendly servo electric or pneumatic motor. Any bevel geometry can be performed within the impressive 7" - 24" range.

J-preps, counter boring, and facing can all be performed, simultaneously, using the correct tooling fitted in (up to) 4 heavy duty hardened multi-position tool holders. Due to its light weight, yet unrivalled power, the PREP 24 is ideal for on-site, off shore, nuclear, and other applications where precision welds are required at an incredible value.

The PREP 24, like the PREP 16 utilise ratchet feed, and locking. This allows effortless setup, and enables the operator to deliver consistent feed with minimal effort.



POWER OPTIONS:

SERVO ELECTRIC

RECOMMENDED



PART NO. TP24SE110 / TP24SE220

PNEUMATIC



PART NO. TP24P

HYDRAULIC



PART NO. TP24H

FEATURES:

SELF-CENTERING



Self-centering 150mm (5.9") one piece locking shaft with built in jaws, eliminates the issue of broken or loosening retaining springs and o-rings.

UNRIVALLED POWER AND STABILITY



TAG innovative bearing/crown and pinion design combined with our large shaft, delivers unrivalled power and stability.

SERVO ELECTRIC

RECOMMENDED



**PATENT
PENDING**

SERVO ELECTRIC control box makes the strongest portable pipe beveling machine available on the market.

EXTENSION KITS



Optional extension kits up to 42" available on request.

RATCHET FEED AND LOCKING



The PREP 24 has unrivalled power and stability, utilising a ratchet system for both jaw locking, and bevel feed.

SIX POINT LOCKING



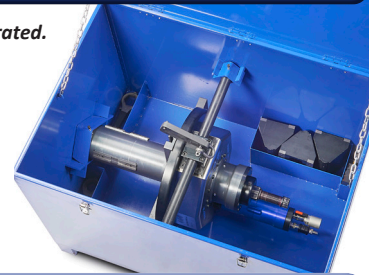
Innovative wide locking jaws offer 6 point locking from 3 jaws giving superior clamping force for chatter free end preps.

PREP 24 TECHNICAL FEATURES

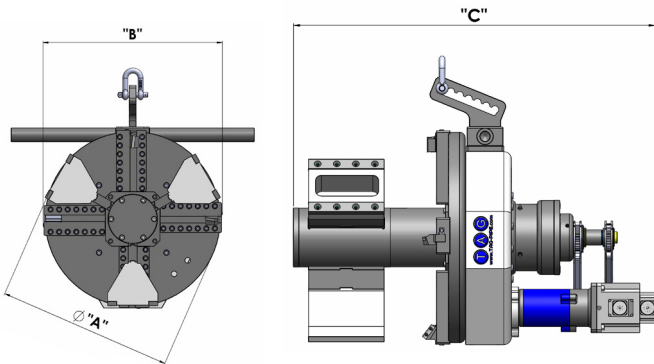
| DESCRIPTION | MEASUREMENT | PNEUMATIC | SERVO ELECTRIC | HYDRAULIC |
|------------------------------|-----------------|---|---|---|
| Part Number | n/a | TP24P | TP24SE110 / TP24SE220 | TP24H |
| Locking tube range | mm / inch (i/d) | 175 - 600mm / 6.9 - 23.6" (optional up to 42") | 175 - 600mm / 6.9 - 23.6" (optional up to 42") | 175 - 600mm / 6.9 - 23.6" (optional up to 42") |
| Working range | mm / inch (o/d) | 180 - 604mm / 7 - 24" (optional up to 42") | 180 - 604mm / 7 - 24" (optional up to 42") | 180 - 604mm / 7 - 24" (optional up to 42") |
| Idle speed | rpm | 2 - 9 | 2 - 9 | 2 - 14 |
| Length of axial feed | mm / inch | 60 / 2.4 | 60 / 2.4 | 60 / 2.4 |
| Max operating temperature | °C | 55 | 60 | 60 |
| Max acoustic radiation | dB | 75 | 45 | 55 |
| Pneumatic Motor Power | hp | 3.5 | n/a | 5.4 |
| Air Consuming Flux | cfm / l/min. | 90 / 2500 | n/a | n/a |
| Air working pressure | psi / bar | 90 / 6.5 | n/a | n/a |
| Air Hose Connection | inches | ¾" | n/a | n/a |
| Servo Electric Motor Power | kw | n/a | 1.5 | n/a |
| Voltage | volt | n/a | 110 or 220 | refer to hydraulic power pack |
| Frequency | Hz | n/a | 50 / 60 | refer to hydraulic power pack |
| Remote Control | Yes / No | No | Yes | Yes |
| Forward / Reverse | Yes / No | No | Yes | Yes |
| Unit weight | kg / lbs | 214 / 471 | 216 / 476 | 210 / 462 |
| Packing dimensions L x W x H | mm | 1200 x 840 x 910 | 1200 x 840 x 910 | 1200 x 840 x 910 |
| Packing weight | kg / lbs | 412 / 908 | 424 / 935 | 408 / 900 |

Our group policy is one of continuous improvement. Products and data tables are subject to change or vary from those illustrated.

- All units are supplied complete with all locking jaws to cover the full range of the machine. Service tools, drawings, instruction manual and warranty certificate are also supplied as standard.
- Each machine is supplied with a protective custom built box.
- Pneumatic machine must be used with filter lubricator and oil - use without will void warranty.



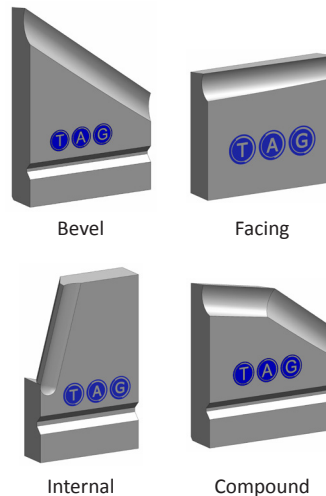
DIMENSIONS



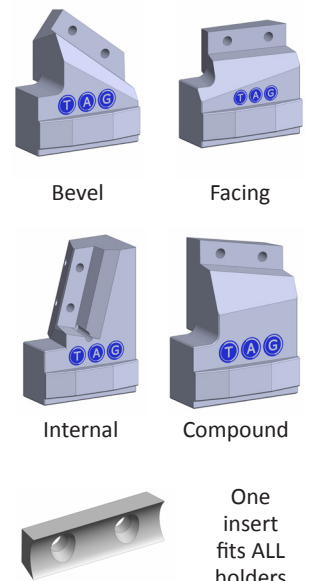
| DIMENSIONS | | PNEUMATIC | SERVO ELECTRIC | HYDRAULIC |
|------------|----|-----------|----------------|-----------|
| ØA | mm | 550 | 550 | 550 |
| B | mm | 580 | 580 | 580 |
| C | mm | 1005 | 955 | 855 |

EXAMPLES OF COMMON CUTTING TOOLS

FORMED TOOLS



HOLDER / INSERT (Recommended)



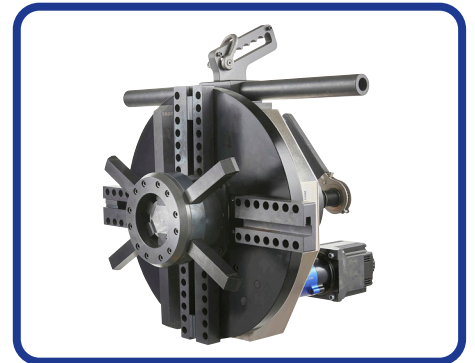
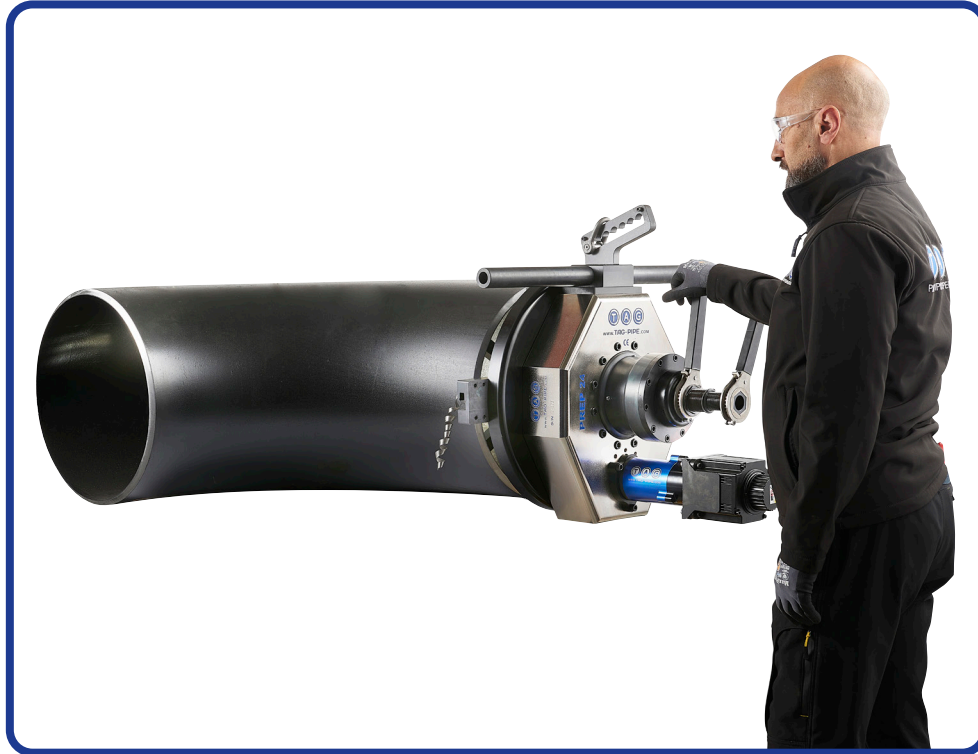
All shapes, sizes and angles available



PREP 16 AND PREP 24 ELBOW / FITTINGS

Portable Elbow and Fitting Machine

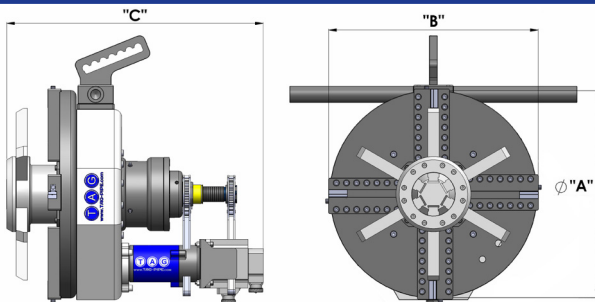
The TAG PREP 16 ELBOW / FITTINGS and TAG PREP 24 ELBOW / FITTINGS complete machine enables bevelling, J-preps, counter boring and facing on elbows and pipe fittings, due to its heavy duty yet compact shaft and 6 piece locking jaw system. The machines can be supplied with either servo electric, pneumatic or hydraulic motor.



PREP 16 AND PREP 24 ELBOW / FITTINGS TECHNICAL FEATURES

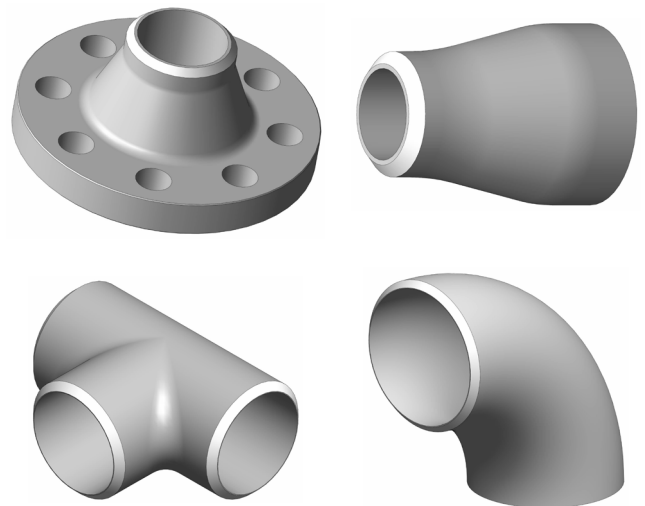
| DESCRIPTION | MEASUREMENT | PNEUMATIC | SERVO ELECTRIC | HYDRAULIC |
|--------------------|-----------------|-----------------------------|-----------------------------|-----------------------------|
| Part Number | n/a | TP16EP | TP16ESE110 / TP16ESE220 | TP16EH |
| Locking tube range | mm / inch (i/d) | 130 - 410mm / 5.11 - 16.14" | 130 - 410mm / 5.11 - 16.14" | 130 - 410mm / 5.11 - 16.14" |
| Part Number | n/a | TP24EP | TP24ESE110 / TP24ESE220 | TP24EH |
| Locking tube range | mm / inch (i/d) | 210 - 600mm / 8.26 - 23.62" | 210 - 600mm / 8.26 - 23.62" | 210 - 600mm / 8.26 - 23.62" |

DIMENSIONS PREP 16/24 ELBOW / FITTINGS



| | DIMENSIONS | | PNEUMATIC | SERVO ELECTRIC | HYDRAULIC |
|---------|------------|----|-----------|----------------|-----------|
| PREP 16 | ØA | mm | 323 | 323 | 323 |
| | B | mm | 407 | 407 | 407 |
| | C | mm | 705 | 650 | 550 |
| PREP 24 | ØA | mm | 550 | 550 | 550 |
| | B | mm | 580 | 580 | 580 |
| | C | mm | 755 | 705 | 605 |

EXAMPLES OF FITTINGS





SPECIALIZED FABRICATION EQUIPMENT
GROUP

Global Locations:



UNITED STATES HEAD OFFICE - HOUSTON

SPECIALIZED FABRICATION EQUIPMENT GROUP

4433 South Drive,
Houston,
Texas 77053, USA

Tel: +1 713 747 8502

E-mail: sales@sfe-brands.com

INTERNATIONAL HEAD OFFICE - FRANCE

SPECIALIZED FABRICATION EQUIPMENT GROUP

330B Route de Portes Les Valence,
ZI les Bosses,
26800 Etoile-sur-Rhône, France

Tel: + 33 (0) 475 575 070

E-mail: sales-int@sfe-brands.com

SFE UNITED KINGDOM

SPECIALIZED FABRICATION EQUIPMENT GROUP

Unit 15 & 16 Grendon Industrial Estate,
Grendon Underwood, Aylesbury,
Buckinghamshire, HP18 0QX England

Tel: +44 (0)1869 324 144

E-mail: sales-uk@sfe-brands.com

SFE GERMANY

SPECIALIZED FABRICATION EQUIPMENT GROUP

Ostmarkstrasse 15,
76437 Rastatt,
Germany

Tel: +49 (0)7222 9355100

E-mail: sales-germany@sfe-brands.com

SFE KINGDOM OF SAUDI ARABIA

SPECIALIZED FABRICATION EQUIPMENT GROUP

Warehouse No: EM16-10, Air Base Determinant,
Industrial supply scheme, Ash Shulah, Dammam
34264, Saudi Arabia

Tel: + 966 50 515 8196

E-mail: sales-ksa@sfe-brands.com

SFE MIDDLE EAST

SPECIALIZED FABRICATION EQUIPMENT GROUP

Shams Freezone
Sharjah

United Arab Emirates

Tel: +971 (0)50 217 1376

E-mail: sales-me@sfe-brands.com

SFE INDIA

SPECIALIZED FABRICATION EQUIPMENT GROUP

Plot No. PAP 3, D 3 Block,
Chinchwad, Pune 411 019

Mob: +91 90 1102 4332

Mob: +91 95 5258 4361

E-mail: sales-india@sfe-brands.com

SFE LATIN AMERICA

SPECIALIZED FABRICATION EQUIPMENT GROUP

4433 South Drive,
Houston,
Texas 77053, USA

Tel: +1 713 747 8502

E-mail: sales-latam@sfe-brands.com

SFE SOUTH KOREA

SPECIALIZED FABRICATION EQUIPMENT GROUP

102 - 1301 Bucheon Technopark III
421 - 742 Gyeonggi-do-seoul, Taehan-min'guk
South Korea

Tel: +82 32 624 2870

E-mail: sales-asia@sfe-brands.com

SFE VIETNAM

SPECIALIZED FABRICATION EQUIPMENT GROUP

Emerald Block A, No.2, Road N4,
Son Ky Ward, Tan Phu District,
Ho Chi Minh, Vietnam

Tel: +84 91 951 70 18

E-mail: sales-vietnam@sfe-brands.com

SFE CHINA

SPECIALIZED FABRICATION EQUIPMENT GROUP

1208, 12F, #D 7001 Zhongchun RD
Minhang District
Shanghai, China

Tel: +86 215 429 1891

E-mail: sales-china@sfe-brands.com

Copyright © 2022 Specialized Fabrication Equipment Group, All rights reserved.

OUR BRANDS

